

2019



CHAMPIONSHIP PULLING



EAST CENTRAL IOWA PULLERS ASSOCIATION

EAST CENTRAL IOWA PULLERS ASSOCIATION 2019

Once upon a time, a Super Farm back in 2011 was roughly 1100 horsepower at 640 cubic inches. Step ahead to 2019 a hard running Farm Stock tractor is probably close to 750 horsepower. A competitive Too Hot To Farm Tractor is a 1000hp. Heck, even a 360 cubic inch diesel engine with a box 2.3" inlet wheel turbocharger is getting in the 700 horsepower ballpark.

For ECI to stay relevant, and our clubs improvement a priority, we have to change to stay the same. If we don't embrace what's going on around us and evolve, we could be in the same waters as the old boats of Iowa's tractor pulling heritage, instead we are making our own current and you can tell by the way our schedule, membership, and staff has increased, that we are striving to set trends in the sport of truck and tractor pulling. While making the changes necessary to keep growth and continued membership our top priority.

Safe travels to all.

Sincerely,
ECI Management



24 YEARS STONG!

Make sure you check out our BRAND NEW ECIPA website for updated results, points info, rules, schedules and to check out all of our 2019 sponsors!

WWW.ECIPA.NET

ECIPA MANAGEMENT

Class Delegates

- Super Farm—Kyle Betenbender
- LLSS—Dustin Wickman
- Hot Farm—Tim Vorwald
- Too Hot To Farm—Larry Lawrence
- 466 Limited Pro Stocks—Marty Kuhlmann
- 3.0 Diesel Trucks—Matt Poduska
- 2.6 Diesel Trucks—Brian Gilchrist
- Super Stock 2wd Trucks—Dale Clewell
- 360 Hot Stocks—Mike Orr
- Super Stock 4x4 Trucks—Kyle Sullivan
- Hot Street Semis—Buck Simon
- Farm Stock—Logan Schmerbach
- 4.1 Limited Pro Stocks—Brandon Coates

ECIPA Tech Officials

- Scott Roshar
- Gary "Bear" Becker
- John Koehn
- Kevin Licht
- Mark Kelchen
- Nate Gibbs
- Jeff Carroll
- Kendall Coates
- Nick Shirley

Board of Directors

Alan Mohr
Gary "Bear" Becker
Scott Roshar
Marty Kuhlmann
Wyatt Blackford

ECIPA Officers

President	Wyatt Blackford
Vice President	Tim Vorwald
Secretary/Treasurer	Gina Stevenson
Marketing	Ryan Sieck

**FOR ECIPA INFORMATION, EMAIL US AT
PULLECIPA@GMAIL.COM**

2019 ECI PA CLASSES

13,000LB FARM STOCK

- 10MPH SPEED LIMIT
- NO P-PUMPS
- 20.8R38'S OR 18.4R42" MAX REAR TIRES ALLOWED
- 3000 RPM LIMIT

11,500LB FARM STOCK

- 16MPH SPEED LIMIT
- 10,750LB WEIGHT LIMIT IF USING CUT TIRES
- 20.8R38'S OR 18.4R42" MAX REAR TIRES ALLOWED
- 3000 RPM LIMIT

9,300LB SUPER FARM

- LIMITED TO 640 CUBIC INCH OEM BLOCK
- SINGLE SLOTTED 3X3" OR 3X4" SMOOTHBORE TURBOCHARGER
- 24.5X32" TIRES
- AIR TO WATER INTERCOOLER ALLOWED

9,500LB HOT FARM

- 466CI ALLOWED INTERCOOLERS
- 640CI NOT ALLOWED INTERCOOLERS
- MAX 20.8X38" TIRES, ANY CUT ALLOWED
- SINGLE 3X3 SLOTTED TURBOCHARGER ONLY
- 3000 RPM LIMIT

6,700/6,450LB LIGHT LIMITED SUPER STOCK

- DIESEL—410CI SINGLE TURBO OR 315CI W/ TWIN TURBOS, ALLOWED 24.5X32" TIRES, WEIGHT 6,700LBS
- ALCOHOL—370CI SINGLE TURBO AND WEIGHT 6,450LBS, ALLOWED 30.5X32" TIRES

7,700LB 360 HOT STOCKS

- 370CI MAX
- NO INTERCOOLER, MAX P-PUMP
- 18.4X38 ANY CUT TIRE ALLOWED
- SINGLE SEALED 2.33" TURBO
- 3500 RPM LIMIT

8,500LB 466 LIMITED PRO STOCKS

- 470CI MAX
- SINGLE SMOOTHBORE 3X4" TURBO
- NO RPM LIMITED
- 24.5X32", 20.8X38" OR 18.4X42" ANY CUT ALLOWED

8,000LB LIMITED PRO STOCK DIESEL TRUCKS

- 10MPH SPEED LIMIT
- NO P-PUMPS
- 20.8R38'S OR 18.4R42" MAX REAR TIRES ALLOWED
- 3000 RPM LIMIT

6,200LB SUPER STOCK 4X4 TRUCKS

- 530CI MAX
- FACTORY PRODUCTION FRAME
- NATURALLY ASPIRATED
- MAX 35X12.50" DOT APPROVED TIRES
- OPEN DRIVELINE ALLOWED

6,200LB SUPER STOCK 2WD TRUCKS

- 480CI MAX
- NATURALLY ASPIRATED
- MAX 12.50X35" DOT APPROVED TIRE ALLOWED
- MUST BE FACTORY PRODUCTION VEHICLE
- SINGLE 4 BARREL CARBURETOR ONLY

9,500LB 4.1 LIMITED PRO STOCKS

- 640CI MAX
- SINGLE 4.1 TURBOCHARGER
- MAX TIRE SIZE 24.5X32"
- FACTORY REAR ENDS ONLY, NO COMPONENT CHASSIS ALLOWED

20,000LB HOT STREET SEMIS

- ENGINE MUST BE OEM IN A CLASS 8 TRUCK
- ECM MUST BE FACTORY MATCHING
- 3000RPM LIMIT
- SINGLE 4.1" TURBO OR FACTORY TWIN TURBOS
- WATER INJECTION ALLOWED

8,000LB 2.6 DIESEL TRUCKS

- FACTORY 1 TON AND UNDER DIESEL ENGINE & DRIVETRAIN ALLOWED
- SINGLE 2.6" SMOOTHBORE TURBO
- SINGLE REAR WHEEL ONLY, DOT TIRES ONLY
- AIR TO AIR INTERCOOLER ALLOWED

6,500LB IMPROVED STOCK TRUCKS

- 480CI MAX ALLOWED, FACTORY 8.1 AND V10'S ARE ALLOWED
- 1 TON AND UNDER DRIVELINE
- SINGLE CARBURETOR, DUAL PLANE INTAKE
- FACTORY FRAME, DOT TIRES

MIDWEST DIESEL



(563) 542-5980

Dyno Tuning and Diagnostics

Performance • Power • Economy

Competition • Off-Highway

Randy@BigTruckDyno.com

EGR • DPF • DEF

The logo for ECI Pullers Assn. Inc. is located in the bottom right corner. It features the letters "ECI" in a large, bold, yellow font with a black outline, set within a black oval. Below "ECI" is the text "PULLERS ASSN. INC." in a smaller, yellow, sans-serif font.

FARM STOCK



2018 POINTS CHAMPION

INTERNATIONAL 1066

LOGAN SCHMERBACH—LAMOTTE, IA

INTERNATIONAL 1066
KOLLIN BROWNELL—WESTGATE, IA



MASSEY FERGUSON 1155
JAKE TIMMERMAN—DICKEYVILLE, WI



JOHN DEERE 4320
PAUL OLINGER—MARION, IA



JOHN DEERE 4010
KENDAL COATES—DELMAR, IA



CASE 1170 DEMONSTRATOR
KEITH CONLEN—STERLING, IL



FORD TW20
NATE SHANK—DIXON, IL



INTERNATIONAL 1066
KYLE BERGFELD—PEOSTA, IA



JOHN DEERE 4520
KEVIN WARNKE—FREDERICKSBURG, IA



13,000LB FARM STOCK

JOHN DEERE 4440
DEREK SIGENTHALER—MINERAL POINT, WI



JOHN DEERE 4430
BOBBY NIHLES & BRANDON OGLESBY—PLATTEVILLE, WI



JOHN DEERE 5020
LUKE & SAM ARNOLD—WALKER, IA



INTERNATIONAL 1066
VINCE MATTHIAS—SUMNER, IA



INTERNATIONAL 1066
ERIK VESBACH—VIROQUA, WI



INTERNATIONAL 766
TOM MOHR—DEWITT, IA



13,000LB FARM STOCK



Ryan Roossinck
Photographer

e: rroossinck@gmail.com

m: 515.339.0035

 [rroossinck](https://www.instagram.com/rroossinck)
 [Ryan Roossinck](https://www.facebook.com/RyanRoossinck)





CORRIDO*R*
SEO

***Local Marketing That Puts
Your Business On The Map!***

- Website Design -
- Search Engine Optimization -
- Digital Marketing -

(844) 210-9990

CorridorSEO.com

iowaseo@corridorseo.com

[illegible]

SUPER FARM



2018 POINTS CHAMPION

ABSOLUTELY NUTS

KEVIN VIERKANDT—ALDEN, IA

RED RESURRECTION

ANDY SCHULDT—READLYN, IA



DEERE HUNTER

KYLE BETENBENDER—COGGER, IA



RYNO

RYAN JENSEN—OSAGE, IA



BAD THINGS

RICK EVANS—SPRINGVILLE, IA



BINDER EXPRESS

DAN SCHULTE—MANCHESTER, IA



NO PROBLEM

TROY HEIDERSCHEIT—EPWORTH, IA



NEVER ENOUGH

PAUL VANDE NOORDE—PELLA, IA



LIL RED ROOSTER

JEFF TAYLOR—SPRINGVILLE, IA



WHEEL FARM SUPER TRUCKS

ULTIMATE DECEPTION

DENNIS STONEKING—NORTHWOOD, IA



RYNO RELOADED

BRAD JENSEN—MITCHELL, IA



DERANGED DEERE

JEROMIE SCHROEDER—SUMNER, IA



FOLLOW ECIPA ON SNAPCHAT!
PULL_ECIPA

TAZMANIAN DEERE

CURT JENSEN—GREELEY, IA



SCATTERED PARTS RELOADED

KIRK DOSLAND—MONMOUTH, IA



9,300LB SUPER FARM



JEFFERY P. TAYLOR

ATTORNEY AT LAW

KLINGER, ROBINSON & FORD, L. L. P.

401 OLD MARION ROAD NE
CEDAR RAPIDS, IOWA 52402

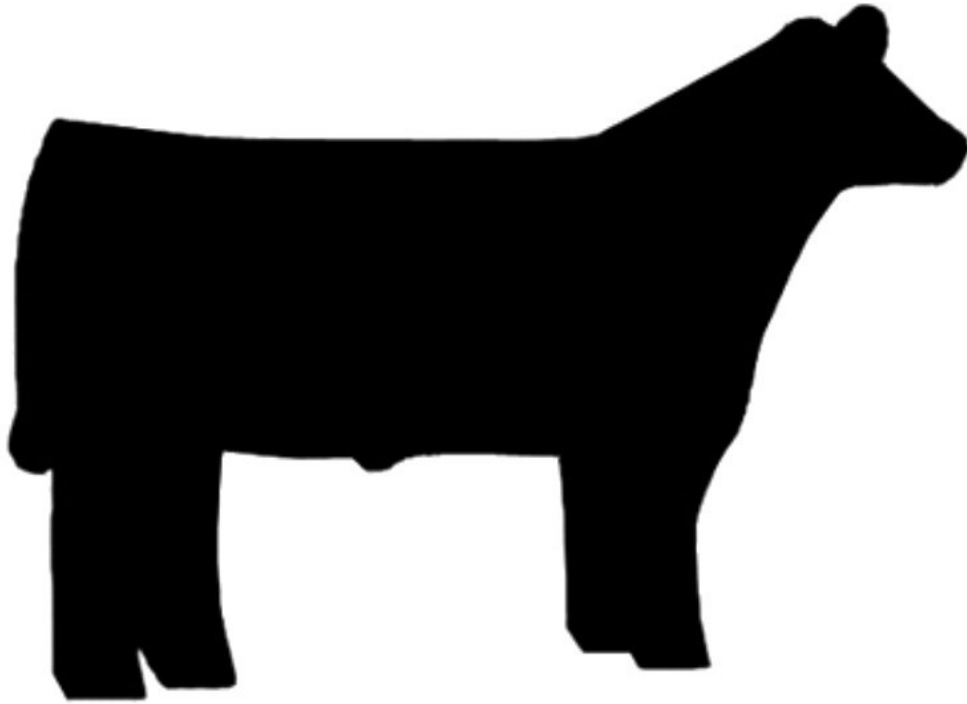
PHONE: (319) 395-7400
FACSIMILE: (319) 395-9041

jtaylor@krflawfirm.com

HYNICK
DIESEL & DYNO
641-660-7058

- *DYNO TUNING*
- *TRACTOR REPAIR*
- *CUSTOM MACHINING*
- *CUSTOM FABRICATION*

BETENBENDER FARMS



KYLE BETENBENDER

COGGON, IOWA

SHOW CALVES & DEKALB SEED SALES

319-533-8809



8,000LBS



2.6 DIESEL TRUCKS



2018 POINTS CHAMPION

GREAT WHITE

BRIAN GILCHRIST—CENTER POINT, IA

BOOSTED PLEASURE
CURT SMALLEY—TOETERVILLE, IA



SCRAP PILE
LOGAN HASE—MANLY, IA



2002 CHEVY
JUSTIN VEACH—BELLEVUE, IA



BAD DECISIONS
NATE WEBBER—LANCASTER, WI



RENEGADE
LEE FOREMAN—CLINTON, IA



TOUGH DECISIONS
CLINT BADER—SCALES MOUND, IL



DESTROYED
RANDY BAHL—LANCASTER, WI



8,000LB 2.6 DIESEL TRUCKS

Special Thanks to our Photographers:
Ryan Roossinck Photography
Foggy Bottom Images—Clayton Ullom
In the Action Photography
Brenda Taylor
Brandon Johnson/Beer Money Pulling Team
All Pro Photos

11,500LBS

TOO HOT TO FARM



2018 POINTS CHAMPION

SMOKIN' MONEY
DAN ARNOLD—WALKER, IA

THE SOUTH PAW
LARRY LAWRENCE—MONTICELLO, IA



MAMA'S MONEY
DOMINIC HOLDGRAFER—BELLEVUE, IA



INTERNATIONAL 1066
TYLER WESSELS—EARLVILLE, IA



LIL BEEFED UP
WES THOMA—JESUP, IA



INTERNATIONAL 1066
TRAVIS SIEVERDING—BELLEVUE, IA



DOUBLE TROUBLE
RYAN MILLER—WALKER, IA



INTERNATIONAL 966
MITCH ZUMBACH—COGGON, IA



INTERNATIONAL 966
DAN HEIMS—DELHI, IA



11,500LB 2 HOT 2 FARM

INTERNATIONAL 1466

ADAM MOORE—BLOOMINGTON, WI



SCAREDY CAT

DEAN SHINSTINE—WAVERLY, IA



JUST BUCKIN' AROUND

KYLE LIESTIKOW—TRIPOLI, IA



JOHN DEERE 4455

BOBBY NIHLES—PLATTEVILLE, WI



JOHN DEERE 6030

RAY TELLIN—WESTGATE, IA



INTERNATIONAL 1466

TREVOR SEFFROOD—WARREN, IL



ONE ROYAL DEERE

JEREMY REUTER—POTOSI, WI



ALLIS CHALMERS 8050

ERIC RUSSELL—MONTICELLO, IA



11,500LB 2 HOT 2 FARM

MY SISTER'S INHERITANCE

COLLIN KELTING—WALCOTT, IA



GOLD DIGGER

RON MOORE—GLEN HAVEN, WI



11,500LB 2 HOT 2 FARM

cen·pe·co[®]

LUBRICANTS

Sales Rep—Denny Fleer
319-560-0066

www.cen-pe-co.com



6,700/6,450LBS



LIGHT LIMITED SUPER STOCKS



2018 POINTS CHAMPION

POSSESSED

DARIN HYNICK—EDDYVILLE, IA

DOUBLE "00" BUCK
DUSTIN WICKMAN—TROY MILLS, IA



PURE ATTITUDE
DON NEWTON—LUZURNE, IA



MALFUNCTION JUNCTION
MOHR PULLING TEAM—LADORA, IA



KNEE DEEP
BRANT GREINER—WASHINGTON, IA



6,700/6,450LB LLSS

Ament Diesel Tuning LLC
Farley, IA

Austin 563-590-4960

Joe 563-451-6830

Amentdieseltuning@gmail.com

f amentdieseltuning

€kotuningCom

Z-RIDE
DAVE ZENZE—POTOSI, WI



ST

MAVERICK
MCMEEL PULLING TEAM—LISBON, IA



**AMENT DYNO
SERVICE**
GOT HORSEPOWER?
FARLEY, IA
563-744-3424



**401 3rd Ave NW
Farley, IA**



FORD F-250 SUPERDUTY



CHEVY SILVERADO 2500HD



GMC SIERRA 2500HD



RAM 2500HD

Get **More**
with **McGrath**

***Selection • Service
Savings***

35 YEARS OF SERVING RURAL AMERICA

BigIron AUCTIONS

For 35 years, BigIron has been teaming up with farmers and dealers to provide the best equipment auction experience in North America. At the heart of BigIron's success and growth is the experienced and knowledgeable staff of sales representatives. Full service means we prepare, list, photograph your equipment, and develop the right marketing plan to drive the most bidders to your auction. **This proven process is why BigIron's relationships live on long after the auction ends.**



When it's time
to sell your
equipment, call
**BigIron
Auctions**



UNRESERVED

Unreserved auctions bring in more bidders creating more competition.



NO BUYER FEES

No fees means buyers have more money for bidding.



TRANSPARENCY

Buyers are encouraged to contact sellers, ask questions, inspect items



LIEN FREE

Free transfer of item from seller to buyer, increasing buyer confidence.



FULL SERVICE

BigIron creates quality listings for the seller with detailed descriptions, photos, videos and supporting documentation, markets to a global audience, ensures items are lien free and collects payments to facilitate a smooth transfer of sold items and funds

BigIron
AUCTIONS

Sell your equipment on BigIron.com
CALL TODAY! 1-800-937-3558

Rural Connections |
Respected Values |
Real Deals |

The logo for ECI Pullers Assn. Inc. is an oval emblem. It features the letters "ECI" in a large, bold, yellow, stylized font with a black outline. Below "ECI", the words "PULLERS ASSN. INC." are written in a smaller, yellow, sans-serif font, also with a black outline. The entire logo is set against a black background within the oval.

A red Chevrolet pickup truck, likely a 1955 model, is shown from a front-three-quarter view. The truck is painted a vibrant red and features a large, stylized logo on the side that reads "The American Express" in blue and white lettering with a star. On the front bumper, there is a sign with a blue background and white text that says "WHEN I SAY PULL YOU PULL". The truck has chrome wheels and dual exhaust pipes. It is parked on a dirt surface, and a crowd of people is visible in the background, suggesting a fair or festival setting.

2018 POINTS CHAMPION

THE AMERICAN EXPRESS

LEO MASSMAN—WAVERLY, IA

BLUE THUNDER
LARRY BOGGESS—WAVERLY, IA



BENDER
KYLE KAYSER—INDEPENDENCE, IA



SUMMER MISTRESS
STEVE LANTOW—SHELL ROCK, IA



ONE GEAR FASTER
TERRY PATTERSON—ELIZABETH, IL



GOOD RUN OF BAD LUCK
CODY KAYSER—JESUP, IA



BAD INTENTIONS
DENNY SCHMIDT—CHARLES CITY, IA



6,200LB SUPER STOCK 2WD

**Call for a
Free
Estimate!**



Specializing in:

- Driveways
- Shed Floors
- Garage Slabs
- Patios
- Foundation Work

8,500LBS



466 LIMITED PRO



2018 POINTS CHAMPION

DEFINITELY NUTS

TODD KINSINGER—ALDEN, IA

SWEATIN BULLETS

TERRY WINCH—GARBER, IA



CASE MX

ELMER VAN DONSELAAR—ROSE HILL, IA



DRAGGIN IRON

LOWELL KRONEMAN—OSAGE, IA



TURN ME LOOSE

CARSEN MANGELSEN—BELLEVUE, IA



JOHN DEERE 6250R

MARTY KUHLMANN—DUNKERTON, IA



JUST ONE MORE

HARRY WALKER—WASHINGTON, IA



LITTLE THUNDER

CHAD PETERSON—PRESTON, IA



NICKLE AT A TIME

RUSS MEYER—NORTHWOOD, IA

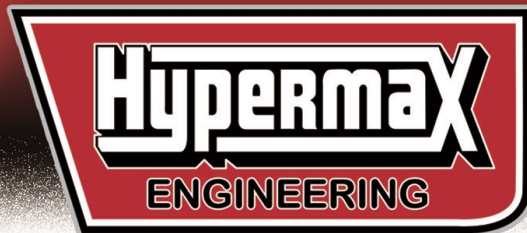


8,500LB LIMITED PRO



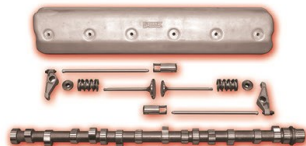
GOHYPERMAX.COM

POWER YOU CAN FEEL 847.428.5655

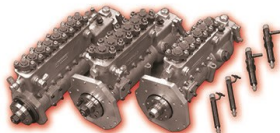


**HYPERMAX
DIESEL DRAGSTER**

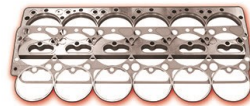
**HYPERMAX/IH DT 466 TRIPLE TURBOCHARGER
3,600 LB. NHRDA TOP DIESEL DRAGSTER 216.27 MPH/6.69 E.T.**



VALVE TRAIN COMPONENTS



INJECTION SYSTEMS



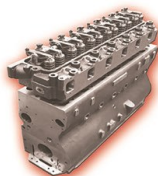
CYLINDER SEALING



**ENGINE
COMPONENTS**



**"BULLET PROOF"
4 BOLT MAIN IH BLOCK**



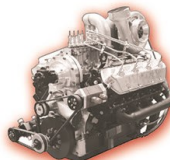
**"HIGH FLOW"
CYLINDER HEAD
SHOWN WITH
4 BOLT MAIN IH BLOCK**

FORD DIESEL PERFORMANCE

- ✓ PICK-UPS, VANS, EXCURSIONS
- ✓ ENGINE COMPONENTS
- ✓ EXHAUST SYSTEMS
- ✓ INJECTORS
- ✓ INTERCOOLERS
- ✓ TURBOCHARGERS
- ✓ ELECTRONICS



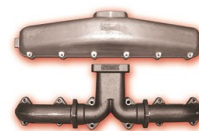
**HYPERMAX
7.3L IN-LINE
FUEL INJECTION
PUMP ENGINE**



**7.3L IN-LINE
FUEL INJECTION
PUMP ENGINE**



TURBO SYSTEMS



MANIFOLDS



**PERFORMANCE PRODUCTS
FOR DIESEL TRACTOR & PICK-UP
TRUCK PULLING MACHINES**

- ✓ TURBOCHARGERS
- ✓ FUEL SYSTEMS
- ✓ COMPLETE ENGINES
- ✓ ENGINE COMPONENTS
- ✓ CLUTCHES & FLYWHEELS
- ✓ TRANSMISSION GEARS

**255 EAST ROUTE 72 GILBERTS, ILLINOIS 60136
EVERYTHING FOR DIESEL ENGINE PERFORMANCE**

8,500LB 466 LIMITED PRO

MULE SKINNER
BRITTANY PEIFFER—HARPER, IA



THE UNKNOWN
CHRIS BATES—KESWICK, IA





JOE BUSCH AG REPAIR

515-432-5715

WWW.JOEBUSCHAGREPAIR.COM



LOOKING TO BUY OR SELL LAND?

Peoples Company is a leading provider of land auction and land brokerage services throughout the midwest.

In 2018:

- **52,541 acres sold and closed for over \$293 million**
- **19,990 acres sold at public auction**



Visit

WWW.PEOPLESCOMPANY.COM

RILEY SIEREN
LAND AGENT/AUCTIONEER
RILEY@PEOPLESCOMPANY.COM
319.591.0111



6,200LBS



SUPER STOCK 4x4



2018 POINTS CHAMPION

BEARLY LEGAL

KYLE SULLIVAN—MANCHESTER, IA

SARGE
SCOTT KELLEY—MANCHESTER, IA



KRYPT KEEPER
JASON KELLEY—MANCHESTER, IA



GEARIN' UP
STEVE BROGLEY—CUBA CITY, WI



IRONMAN
BRIAN KELLEY—STRAWBERRY POINT, IA



BORROWED PARTS
STACI SULLIVAN—MANCHESTER, IA



ONE PIECE AT A TIME
AUSTIN ENGLER—DONAHUE, IA



NASTY
LEE GARRITY—DEWITT, IA



6,200LB SUPER STOCK 4X4

TRACTION/LADDER BARS
EXHAUST STACKS



CUSTOM FABRICATION
RADIUS ARMS/4 LINKS

OUTLAW FAB
WWW.OUTLAWFABS.COM

9,500LBS



4.1 LIMITED PRO



2018 POINTS CHAMPION

PERFECT '10'

MIKE SCHULTZ—MARION,IA

INSTIGATOR
BILL FIGANBAUM—TRIPOLI, IA



BAD KITT
BRIAN BUCHHOLZ—WAVERLY, IA



PULL-N-PRAY
ROSS LANGMAID—NEWTON, IA



FEARLESS FORD
STEVE HAY—SULLY, IA



NEVER ENOUGH 2
PAUL VANDE NOORDE—PELLA, IA



BADGER DEERE
CASEY LEER—READSTOWN, WI



JUST ANOTHER BUCK
BRANDON COATES—DUBUQUE, IA



9,500LB 4.1 LIMITED PRO



Mark Ries Trucking, Inc
550 Iehl Street—Central City, IA 52214
319-310-3267

9,500LBS



INTERNATIONAL 766
STEFFEN FAMILY PULLING TEAM—ZWINGLE, IA

ANDIE PANDY SWEET AS CANDY

CURT BOCKENSTEADT—EDGEWOOD, IA



GO DADDY GO

TED THOMA—JESUP, IA



DEMON DEERE

MARK WIGGINS—PRAIRIE CITY, IA



WILDFIRE

CLARENCE GANSEMER—SHERRIL, IA



SCATTERED PARTS RELOADED

KIRK & LEVI DOSLAND—MONMOUTH, IA



DIGGIN' DEEP

MARK MILLER—LAMOTTE, IA



BARNYARD BUICK

TIM VORWALD—SCOTCH GROVE, IA



RENEGADE OLLIE

DOUG WEGEMAN—EDGEWOOD, IA



HOT FARM TOOLS, 500LB

MISS BEHAVIN'
MATT WINCH—GARBER, IA



THE KIDS INHERITANCE
JOHN MOYER—ANAMOSA, IA



UP IN SMOKE
DAN ARNOLD—WALKER, IA



WARPIG
LARRY BISSEN—STACYVILLE, IA



YELLOW OBSESSION
MARV STUHRENBURG—MT AUBERN, IA



JOHN DEERE 4630
BRIEN SIEREN—WASHINGTON, IA



BAD BINDER
MATT NIEMAN—MASONVILLE, IA



HOT FARM TOOLS

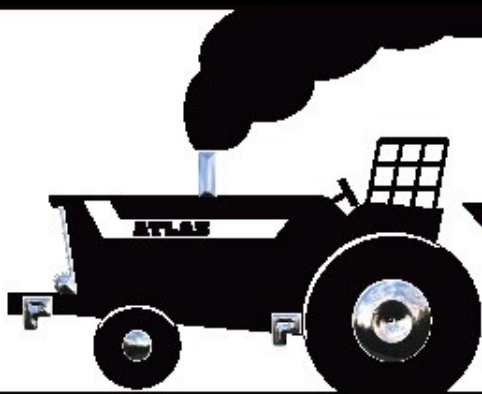


FOLLOW ECIPA ON SOCIAL MEDIA!

Powered By:
AMBUSH



Denny Healy
Marengo, IA
319-330-5080
• Engine Building
• Dyno Service



atlas tractor

Pulling our weight since 1973

SFI Clutches - Transmissions
Custom Gears & Shafts

763-780-9548 AtlasTractor.com
1546 94th Lane • Blaine, MN 55449

20,000LBS



BUCK SIMON—CASCADE, IA

1988 KENWORTH
MIKE SCHAEFER—JESUP, IA



ROLFES TRANSPORT
BOB ROLFES—PETERSBURG, IA



CASUAL HOOK-UP
TERRY GREENWOOD—DYERSVILLE, IA



1983 PETERBUILT
JAKE SCHROEDER—DUBUQUE, IA



MACK SUPERLINER
VAUGHN LAHR—



1956 KENWORTH
MIKE SCHAEFER—JESUP, IA



20,000LB HOT STREET SEMIS

AUGUST 17th, 2019

5TH ANNUAL

BIG TOWN SHOW DOWN

TRUCK & TRACTOR PULL

IN PALO, IOWA

Come watch the
East Central Iowa Pullers Association (ECIPA)

NEW THIS YEAR

During
PALO FUN DAYS

Parade, Craft Fair and Bags
Tournament during the day.
FIREWORKS & BAND
afterward event

For more information visit:
bigtownshowdown.com

Gates Open 5:00 pm

**TRUCK &
TRACTOR
PULL**

starts at 6:00 pm

Sponsored by Cassill Motors



7,700LBS



360 HOT STOCKS



2018 POINTS CHAMPION

FARMALL 560

ANDREW VORWALD—MONTICELLO, IA

7.70LB 360 HOT STOCKS

PLOW BOY'S CADILLAC

STEVE KYARSGAARD—MONMOUTH, IA



GO JUNIOR GO

MARK THOMA—JESUP, IA



LAWLESS

AUSTIN LAWLER—PEOSTA, IA



REDNECK RESCUE

NICK SHIRLEY—OXFORD JUNCTION, IA



HILLBILLY DELUXE

JUSTIN VORWALD—MONTICELLO, IA



BULLETPROOF

MIKE ORR—ON SLOW, IA



PAPA'S TOY

RICK MARTIN—ALBURNETT, IA



TAILBITER

MARK NEFZGER—GREELEY, IA



The logo for ECI Pullers Assn. Inc. is located in the bottom right corner. It features the letters "ECI" in a large, bold, yellow font with a black outline, set within a black oval. Below "ECI" is the text "PULLERS ASSN. INC." in a smaller, yellow, sans-serif font.

THE HAYMAKER

GREG READ—AUSTIN, MN

LATE NIGHT HUSTLE

MITCH MEINHART—HUDSON, IA



HARD CUMMINS

MATT PUNDT—HOMESTEAD, IA



THE BIG DOG

RUSS JOHNSON—RICEVILLE, IA



BAD COMPANY

MATT PODUSKA—SOLON, IA



SILVER BULLET

ADAM KINION—CLARENCE, IA



BANANAMAX

MATT SCHAEFER—JESUP, IA



8,000LB 3.0 DIESEL TRUCKS

➔ GET **LIVE** RESULTS!

VISIT THE NEW ECIPA
WEBSITE FOR REAL
TIME LIVE RESULTS!
WWW.ECIPA.NET

FVP
Fair Valley Performance & Repair

Diesel Fuel Injection & Turbocharger Service

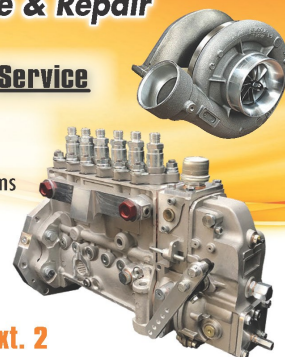
- Stock and High Performance Applications
- Tractor & Truck Pulling
- Injection Pumps
- Injectors (In-House EDM)
- Turbochargers
- Fuel Supply Systems
- Water Injection Systems
- Instrumentation

info@fvpdiesel.com

FVPdiesel.com

Sauk City, WI

608-643-0200 Ext. 2





Appraisal & Real Estate Services

Jammie W. Howard

504 Second Street, Traer, Iowa 50675
Phone: 319-478-2990 · 1-877-844-SOLD
jwhoward@arcs-ia.com

"Professional and Experienced People Giving You Results"

Residential · Commercial · Agricultural · Auctions · Appraisals

www.appraisalandrealestateservices.com

***Specializing in
Farm Tiling and
Waterway Reconstruction**

***All Types of Dozer
and Trackhoe Work**

***Trimble Mapping
and Grade Control**

***Certified for Septic
System Installation**



Scherrman's

IMPLEMENT

CASE II

AGRICULTURE

13951 Iowa 136
Dyersville, IA 52040
563-975-2426

711 South Main St.
Monticello, IA 52310
319-465-3519



www.scherrmans.com



MIDWEST CONCRETE INC.

PEOSTA, IOWA

563-845-0947

Midwest Concrete, Inc., in Peosta, IA, is the area's leading concrete specialist serving Dubuque, Peosta and surrounding areas since 2013.



MARV & ZIP'S REPAIR, INC
412 West Milwaukee
P.O. Box 6
New Hampton, Iowa 50659
641-394-3060

www.marvandzips.com

Dean- Kathy-Bryce-Bob-Susie Stumme



Scotch Grove, Ia
319-465-3770

ECIPA THROUGH THE YEARS...



MOON SEED^{LLC}

Brooklyn, IA
Keystone, IA
Marshalltown, IA
Gary "Bear" Becker
319-560-2686



WYFFELS HYBRIDS



Figanbaum Trucking & Farms

Tripoli, IA

Call (319) 882-4274

Company founded by Bob and Marlys Figanbaum, now owned and operated by Bill Figanbaum, Deb Strottman and Jim Figanbaum.

We are a Premium Haz-mat carrier that hauls food grade chemicals for our valued customers across the USA.

We are a family orientated trucking business . We are mainly in the tanker business, operating 52 tankers. We also haul liquid, anhydrous ammonia, grain , and van freight.



2019 ECIPA SCHEDULE

WWW.ECIPA.NET



JUNE

- 14 CUBA CITY, WI6:30PM
(360, 2.6, SEMI)
22 NORTHWOOD, IA6:30PM
(466, SF, 3.0, 2WD, 4X4)
26 CRESCO, IA6:30PM
(FS, 466, SF, 2.6, 2WD, 4X4)
29 JESUP, IA6:30PM
(ALL CLASSES)
29 CENTRAL CITY, IANOON
(FS, 360, 2H2F, 466, 2.6, GAS)
30 CENTRAL CITY, IA7:00PM
(HF, SF, LLSS, 4.1, 3.0, 2WD, 4X4, SEMI)

JULY

- 4 SIGOURNEY, IA6:30PM
(HF, 466, LLSS, 3.0)
5 DICKEYVILLE, WI6:30PM
(FS, 360, 2H2F, HF, LLSS, 4.1*, 2.6, SEMI)
6 DAVENPORT, IA5:30PM
(ALL CLASSES EXCEPT 4.1 & 2WD)
11 MANCHESTER, IA7:30PM
(FS, 360, 2H2F, HF, 466, SF, 3.0, SEMI)
12 TIPTON, IA7:00PM
(360, 2H2F, HF, SF, 4.1, 3.0, 2.6)
13 WYOMING IA6:00PM
(360, 466, HF, SF, LLSS)
15 WASHINGTON IA7:00PM
(FS, 466, LLSS, 3.0)
17 MONTICELLO IANOON
(360, 2H2F, HF, 466, SF, LLSS, 3.0, 4X4)

- 18 CHARLES CITY, IA6:30PM
(360, SF, 2.6, 2WD, GAS)
19 WEST LIBERTY, IA7:00PM
(FS, 360, 2H2F, HF, 2.6, 4X4, GAS)
20 IOWA CITY, IA6:30PM
(2H2F, 466, LLSS, 2.6, 3.0)
24 MAQUOKETA, IA6:30PM
(360, 2H2F, HF, 466, SF, LLSS)
25 DUBUQUE, IA7:00PM
(ALL CLASSES, FS**, NO IMPROVED STOCK)
28 WAVERLY, IANOON
(FS, 2H2F, HF, 466, SF, 4.1*, 2.6, 2WD, SEMI)
31 OSAGE, IA7:00PM
(HF, 466, SF, 3.0, 2.6, 2WD)

AUGUST

- 9 SPRINGVILLE, IA6:30PM
(2H2F, HF, 466, SF, LLSS, 4.1, 3.0, 2WD, 4X4, SEMI)
10 POTOSI, WI6:30PM
(FS**, 360, 2H2F, HF, LLSS, 2.6, 2WD, SEMI)
17 PALO, IA6:00PM
(2H2F, HF, 466, SF, LLSS, 4.1, 3.0, 2WD, 4X4)
24 MARENGO, IA6:00PM
(FS, 466, SF, LLSS, 4.1, 3.0)
31 TRIPOLI, IA7:00PM
(FS, 2H2F, HF, 466, SF, 4.1, 2WD)

SEPTEMBER

- 7 PLATTEVILLE, WI6:30PM
(4.1)

** ALL PULLERS MUST BE SIGNED IN 30 MINS PRIOR TO STARTING TIME **

* - 4.1 LIMITED PRO STOCK (NON-POINTS)

** - MEMBERS ONLY FARM STOCK IN DUBUQUE & POTOSI

2019 ECIPA CLASSES

FS = FARM STOCK

360 = 360 HOT STOCK

2F2F = TOO HOT TO FARM

HF = HOT FARM

466 = 466 LIMITED PRO

SF = SUPER FARM

LLSS = LIGHT LIMITED SUPER STOCK

4.1 = 4.1 LIMITED PRO STOCK

2.6 = 2.6 PRO STREET DIESEL TRUCKS

3.0 = 3.0 LIMITED PRO DIESEL TRUCKS

2WD = SUPER STOCK 2WD TRUCKS

4X4 = SUPER STOCK 4X4 TRUCKS

GAS = IMPROVED STOCK GAS TRUCKS

SEMI = HOT STREET SEMIS